

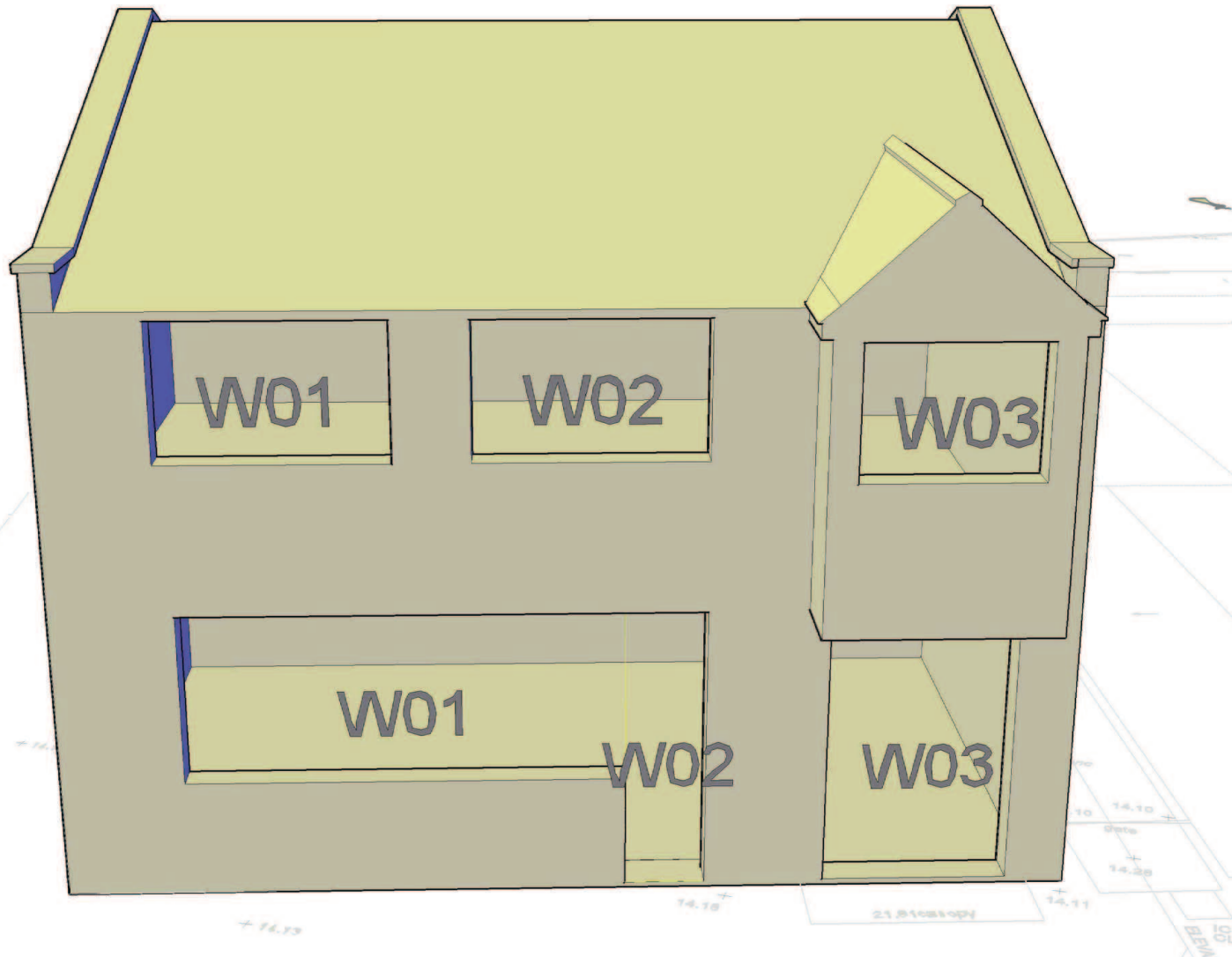
Sources of information

**Robin Walker Architects**

1837\_Site\_A.dwg  
1837\_Elevations\_A.dwg  
proposed plans and elevations - r2.dwg  
**Received: 05/12/14**

Site Photos

Page 179



Project 587 Kingston Road

Title 544 - 548 Kingston Road  
Window Map

Drawn DB Checked DF

Date 05/12/2014 Rel no. 03

Drawing no. 1478-WM01

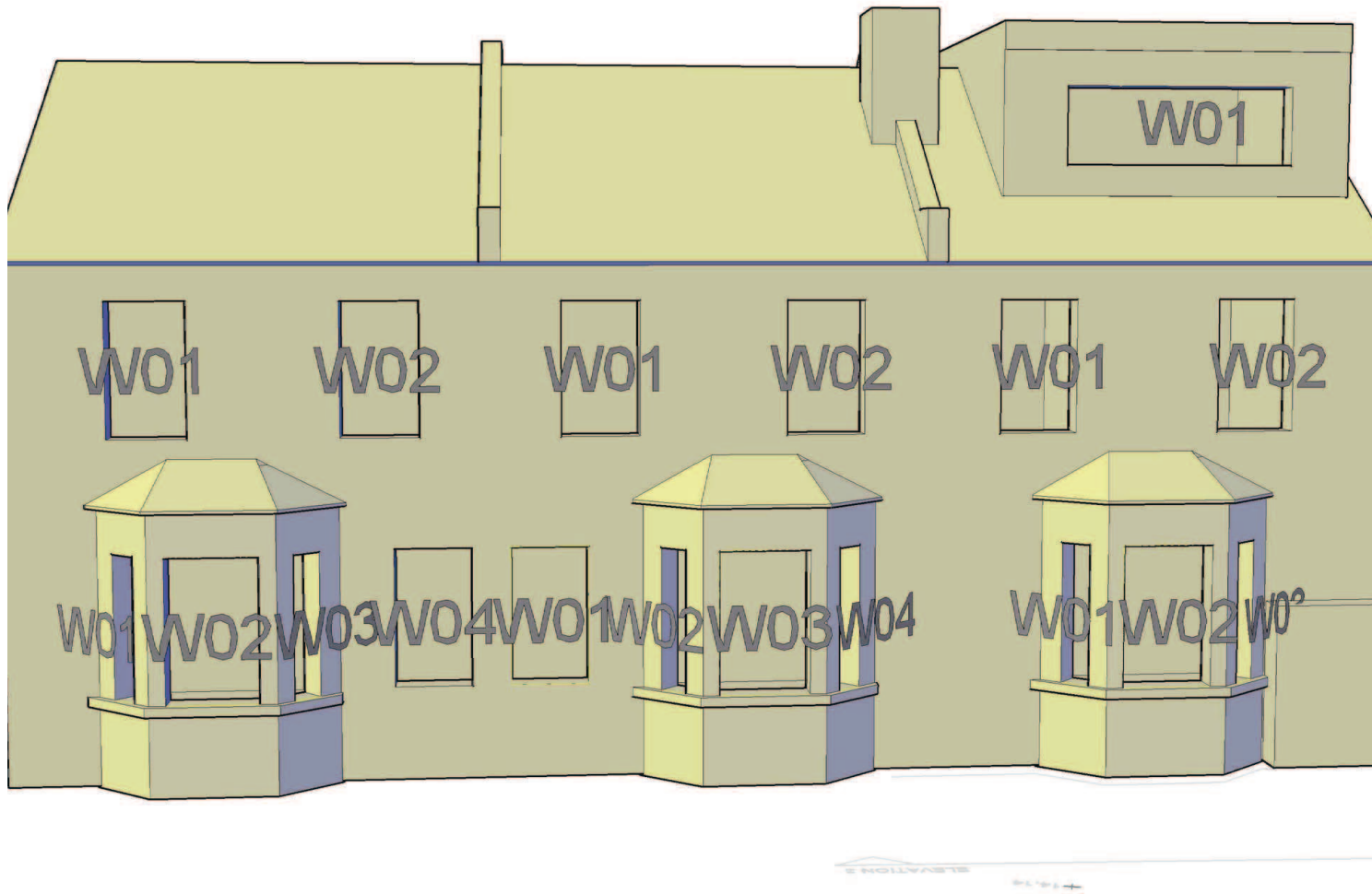
Sources of information

**Robin Walker Architects**

1837\_Site\_A.dwg  
1837\_Elevations\_A.dwg  
proposed plans and elevations - r2.dwg  
**Received: 05/12/14**

Site Photos

Page 180



Project 587 Kingston Road

Title 587b Kingston Road  
Window Map

Drawn DB Checked DF

Date 05/12/2014 Rel no. 03

Drawing no. 1478-WM03

Sources of information

**Robin Walker Architects**

1837\_Site\_A.dwg  
1837\_Elevations\_A.dwg  
proposed plans and elevations - r2.dwg  
**Received: 05/12/14**

Site Photos

Page 181



Project 587 Kingston Road

Title 587b Kingston Road  
Window Map

Drawn DB Checked DF

Date 05/12/2014 Rel no. 03

Drawing no. 1478-WM04



## Appendix 2

### Results of the Daylight & Sunlight assessment to Surrounds

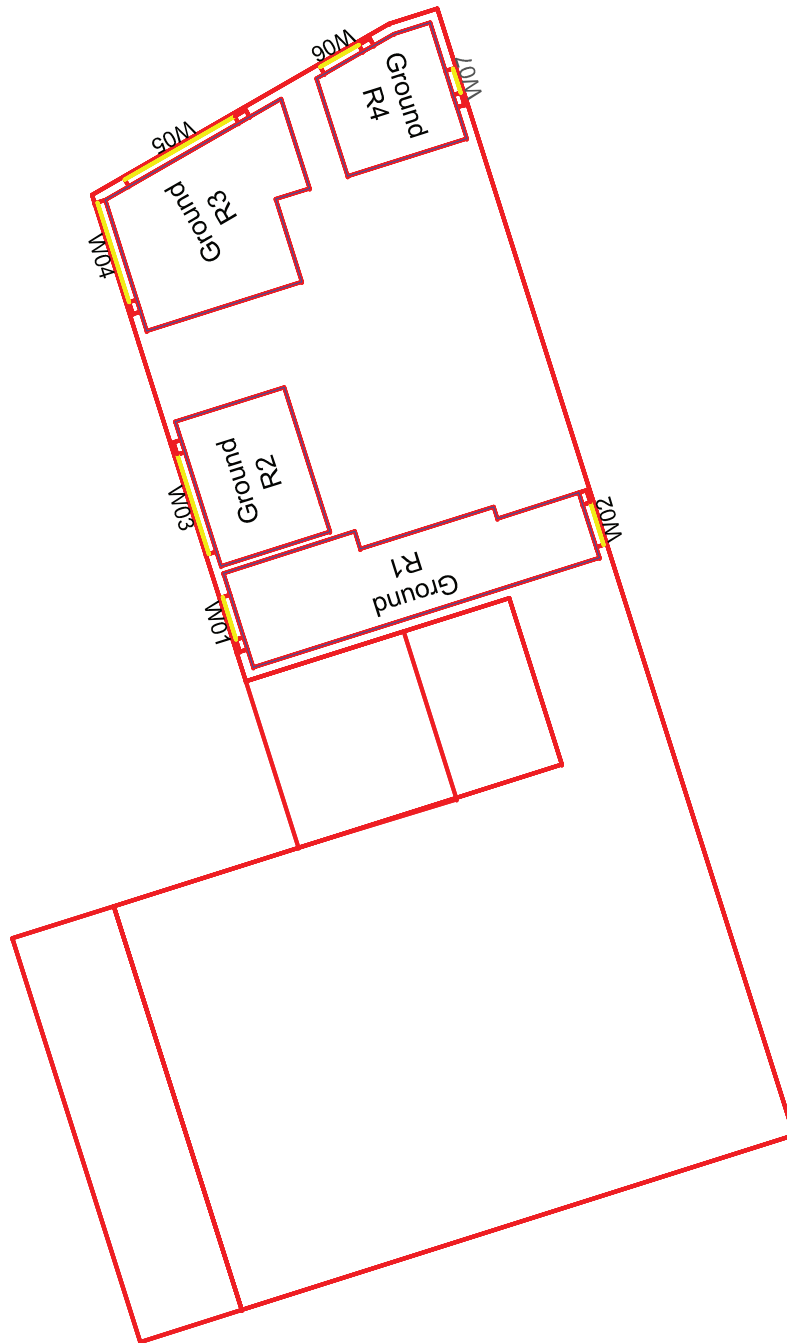
Address	Room	Window	Room Use	Existing VSC	Proposed VSC	Loss VSC	Loss %	Proportion Reduction	Room Area	Existing NSC	Proposed NSC	Loss NSC	Loss %	Existing ADF Window	Total	Proposed ADF Window	Total	Loss ADF	Loss %	Existing APSH Total	Winter	Proposed APSH Total	Winter	Total Loss	Winter Loss
544 Kingston Road																									
Ground	R1	W01	Unknown	36.6	35.9	0.6	1.8	1.0	176.2	176.0	175.9	0.1	0.1	0.4	2.0	0.4	1.9	0.1	4.3	N/A	N/A	N/A	N/A	N/A	N/A
	R1	W02		37.8	35.8	2.0	5.3	0.9						1.3		1.2				N/A	N/A	N/A	N/A	N/A	
	R1	W03		32.0	29.7	2.4	7.4	0.9						0.4		0.3				N/A	N/A	N/A	N/A	N/A	
Ground	R2	W04	Unknown	36.7	34.7	2.1	5.7	0.9	68.4	67.7	67.7	0.0	0.0	1.8	1.8	1.7	1.7	0.1	5.2	N/A	N/A	N/A	N/A	N/A	N/A
First	R1	W01-L	Unknown	37.9	36.1	1.7	4.6	1.0	118.8	116.5	116.5	0.0	0.0	0.0	1.3	0.0	1.3	0.1	4.4	N/A	N/A	N/A	N/A	N/A	N/A
		W01-U												1.3		1.3									
First	R2	W02-L	Unknown	37.7	35.9	1.9	4.9	1.0	114.2	112.1	112.1	0.0	0.0	0.0	1.4	0.0	1.3	0.1	4.7	N/A	N/A	N/A	N/A	N/A	N/A
		W02-U												1.4		1.3									
546 Kingston Road																									
Ground	R1	W01	Unknown	36.7	34.5	2.2	5.9	0.9	68.4	67.7	67.7	0.0	0.0	1.8	1.8	1.7	1.7	0.1	5.4	N/A	N/A	N/A	N/A	N/A	N/A
Ground	R2	W02	Unknown	33.9	32.9	0.9	2.7	1.0	171.6	171.5	171.3	0.2	0.1	0.4	2.0	0.4	1.9	0.1	5.0	N/A	N/A	N/A	N/A	N/A	N/A
		W03		37.1	34.8	2.4	6.3	0.9						1.3		1.2				N/A	N/A	N/A	N/A	N/A	
		W04		30.2	27.7	2.6	8.4	0.9						0.3		0.3				N/A	N/A	N/A	N/A	N/A	
First	R1	W01-L	Unknown	37.6	35.6	2.0	5.2	0.9	114.2	112.1	112.1	0.0	0.0	0.0	1.4	0.0	1.3	0.1	4.9	N/A	N/A	N/A	N/A	N/A	N/A
		W01-U												1.4		1.3									
First	R2	W02-L	Unknown	37.4	35.3	2.1	5.6	0.9	114.2	112.1	112.1	0.0	0.0	0.0	1.4	0.0	1.3	0.1	5.2	N/A	N/A	N/A	N/A	N/A	N/A
		W02-U												1.4		1.3									
548 Kingston Road																									
Ground	R1	W01	Unknown	33.2	32.0	1.2	3.5	1.0	249.2	244.9	231.5	13.3	5.5	0.3	1.5	0.3	1.4	0.1	5.6	N/A	N/A	N/A	N/A	N/A	N/A
		W02		35.8	33.2	2.6	7.2	0.9						1.0		0.9				N/A	N/A	N/A	N/A	N/A	
		W03		25.2	22.6	2.6	10.5	0.9						0.2		0.2				N/A	N/A	N/A	N/A	N/A	
First	R1	W01-L	Unknown	37.0	34.8	2.2	5.9	0.9	114.2	112.1	112.1	0.0	0.0	0.0	1.4	0.0	1.3	0.1	5.5	N/A	N/A	N/A	N/A	N/A	N/A
		W01-U												1.4		1.3									
First	R2	W02-L	Unknown	35.8	33.5	2.3	6.5	0.9	118.8	116.4	116.4	0.0	0.0	0.0	1.3	0.0	1.2	0.1	5.7	N/A	N/A	N/A	N/A	N/A	N/A
		W02-U												1.3		1.2									
Second	R1	W01	Unknown	39.1	37.3	1.8	4.6	1.0	112.6	110.1	110.1	0.0	0.0	2.9	2.9	2.8	2.8	0.1	4.6	N/A	N/A	N/A	N/A	N/A	N/A
550 Kingston Road																									
First	R1	W01-L	Unknown	37.6	33.9	3.7	9.7	0.9	145.6	143.9	143.9	0.0	0.0	0.0	2.3	0.0	2.1	0.2	9.1	N/A	N/A	N/A	N/A	N/A	N/A
		W01-U												1.2		1.0									
First	R1	W02-L	Unknown	37.5	33.6	3.8	10.2	0.9	145.6	143.9	143.9	0.0	0.0	0.0	2.3	0.0	2.1	0.2	9.1	N/A	N/A	N/A	N/A	N/A	N/A
		W02-U												1.1		1.0									
First	R2	W03-L	Unknown	37.4	33.4	4.1	10.8	0.9	68.0	67.0	67.0	0.0	0.0	0.0	1.2	0.0	1.1	0.1	9.8	N/A	N/A	N/A	N/A	N/A	N/A
		W03-U												1.2		1.1									
552 Kingston Road																									
First	R1	W01-L	Unknown	37.3	33.1	4.2	11.3	0.9	67.9	67.0	67.0	0.0	0.0	0.0	1.2	0.0	1.1	0.1	10.2	N/A	N/A	N/A	N/A	N/A	N/A
		W01-U												1.2		1.1									
First	R2	W02-L	Unknown	37.1	32.8	4.3	11.6	0.9	146.3	144.6	144.6	0.0	0.0	0.0	2.3	0.0	2.0	0.2	10.4	N/A	N/A	N/A	N/A	N/A	N/A
		W02-U												1.1		1.0									
		W03-L												37.1		32.7				4.3	11.7	0.9	0.0	0.0	N/A
W03-U	1.1	1.0	0.0	0.0	N/A	N/A	N/A	N/A	N/A	N/A	N/A	N/A													
554 Kingston Road																									
First	R1	W01-L	Unknown	36.9	32.7	4.2	11.4	0.9						0.0		0.0				N/A	N/A	N/A	N/A	N/A	N/A

Address	Room	Window	Room Use	Existing VSC	Proposed VSC	Loss VSC	Loss %	Proportion Reduction	Room Area	Existing NSC	Proposed NSC	Loss NSC	Loss %	Existing ADF Window	Total	Proposed ADF Window	Total	Loss ADF	Loss %	Existing APSH Total	Winter	Proposed APSH Total	Winter	Total Loss	Winter Loss	
First	R1	W01-U	Unknown	36.8	32.7	4.1	11.1	0.9	146.1	144.2	144.2	0.0	0.0	1.1	2.3	1.0	2.0	0.2	9.9	N/A	N/A	N/A	N/A	N/A	N/A	
		W02-L												0.0		0.0										
		W02-U												1.1		1.0										
556 Kingston Road	R2	W03-L	Unknown	36.7	32.9	3.9	10.5	0.9	67.4	66.3	66.3	0.0	0.0	0.0	1.2	0.0	1.1	0.1	9.3	N/A	N/A	N/A	N/A	N/A	N/A	
		W03-U												1.2		1.1										
556 Kingston Road	R1	W01-L	Unknown	36.7	33.1	3.6	9.8	0.9	67.3	66.3	66.3	0.0	0.0	0.0	1.2	0.0	1.1	0.1	8.8	N/A	N/A	N/A	N/A	N/A	N/A	
		W01-U												1.2		1.1										
556 Kingston Road	R2	W02-L	Unknown	36.6	33.3	3.4	9.2	0.9	67.3	66.3	66.3	0.0	0.0	0.0	1.2	0.0	1.1	0.1	8.8	N/A	N/A	N/A	N/A	N/A	N/A	
		W02-U												0.0		0.0										
556 Kingston Road	R2	W03-L	Unknown	36.7	33.5	3.2	8.7	0.9	147.3	145.4	145.4	0.0	0.0	0.0	2.2	0.0	1.0	2.1	0.2	8.0	N/A	N/A	N/A	N/A	N/A	N/A
		W03-U												1.1		1.0										
558 Kingston Road	R1	W01-L	Unknown	36.6	33.9	2.7	7.3	0.9	147.0	145.0	145.0	0.0	0.0	0.0	2.2	0.0	1.1	2.1	0.1	6.4	N/A	N/A	N/A	N/A	N/A	N/A
		W01-U												1.1		1.0										
558 Kingston Road	R1	W02-L	Unknown	36.6	34.1	2.5	6.8	0.9	147.0	145.0	145.0	0.0	0.0	0.0	2.2	0.0	1.1	2.1	0.1	6.4	N/A	N/A	N/A	N/A	N/A	N/A
		W02-U												1.1		1.0										
558 Kingston Road	R2	W03-L	Unknown	36.7	34.5	2.2	6.1	0.9	70.4	69.2	69.2	0.0	0.0	0.0	1.2	0.0	1.1	1.1	0.1	5.5	N/A	N/A	N/A	N/A	N/A	N/A
		W03-U												1.2		1.1										



## Appendix 3

### Results and plots of the internal daylight assessment



Sources of information

**Robin Walker Architects**

1837\_Site\_A.dwg  
1837\_Elevations\_A.dwg  
proposed plans and elevations - r2.dwg  
**Received: 05/12/14**

Site Photos

Project 587 Kingston Road

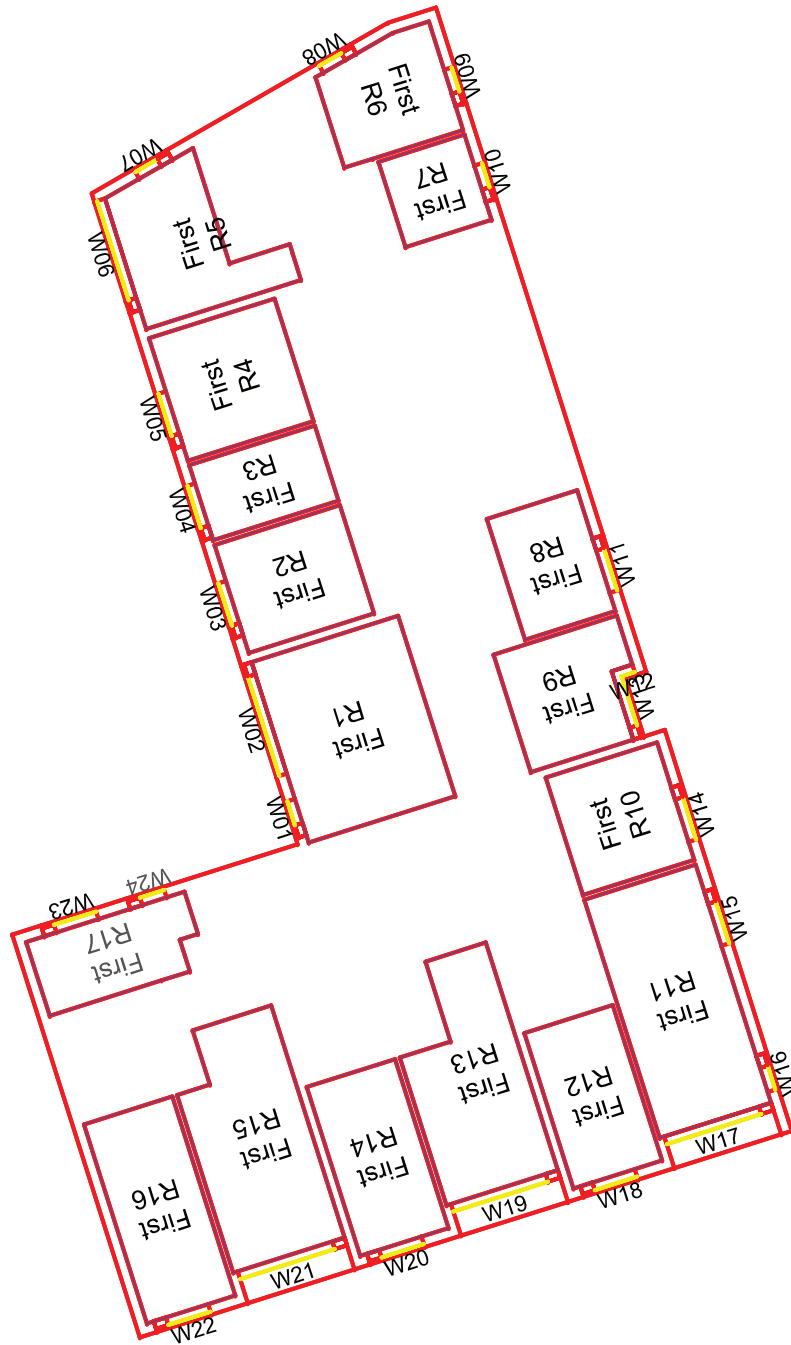
Title Ground Floor  
Room Layout

Drawn DB Checked DF

Date 05/12/2014 Rel no. ID02

Drawing no. 1478-ID01





Studio 1b, 63 Webber Street  
London, SE1 0QW  
T: +44(0)20 7148 6290  
E: info@eb7.co.uk W: eb7.co.uk



Sources of information

**Robin Walker Architects**

1837\_Site\_A.dwg  
1837\_Elevations\_A.dwg  
proposed plans and elevations - r2.dwg  
Received: 05/12/14

Site Photos

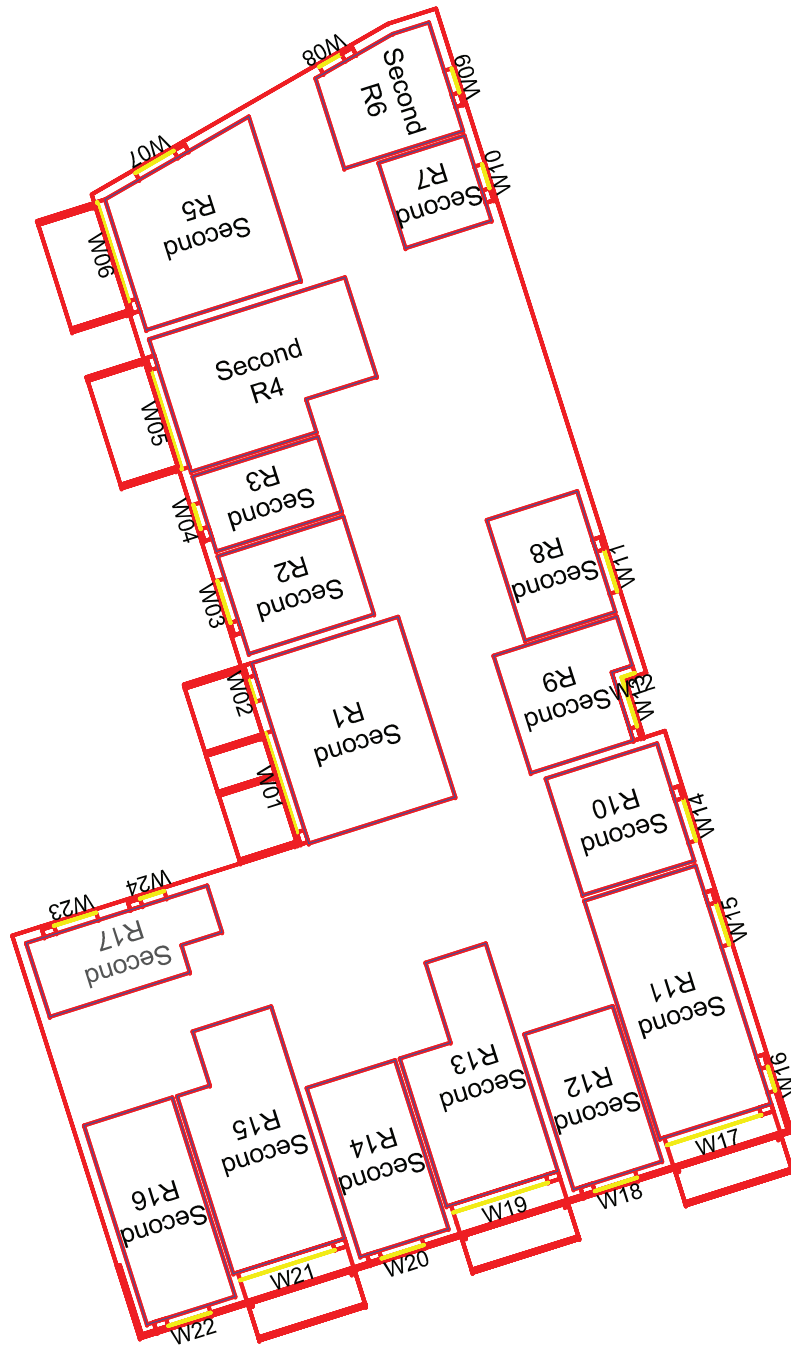
Project 587 Kingston Road

Title First Floor  
Room Layout

Drawn DB Checked DF

Date 05/12/2014 Rel no. ID02

Drawing no. 1478-ID02



Sources of information

**Robin Walker Architects**

1837\_Site\_A.dwg  
1837\_Elevations\_A.dwg  
proposed plans and elevations - r2.dwg  
Received: 05/12/14

Site Photos

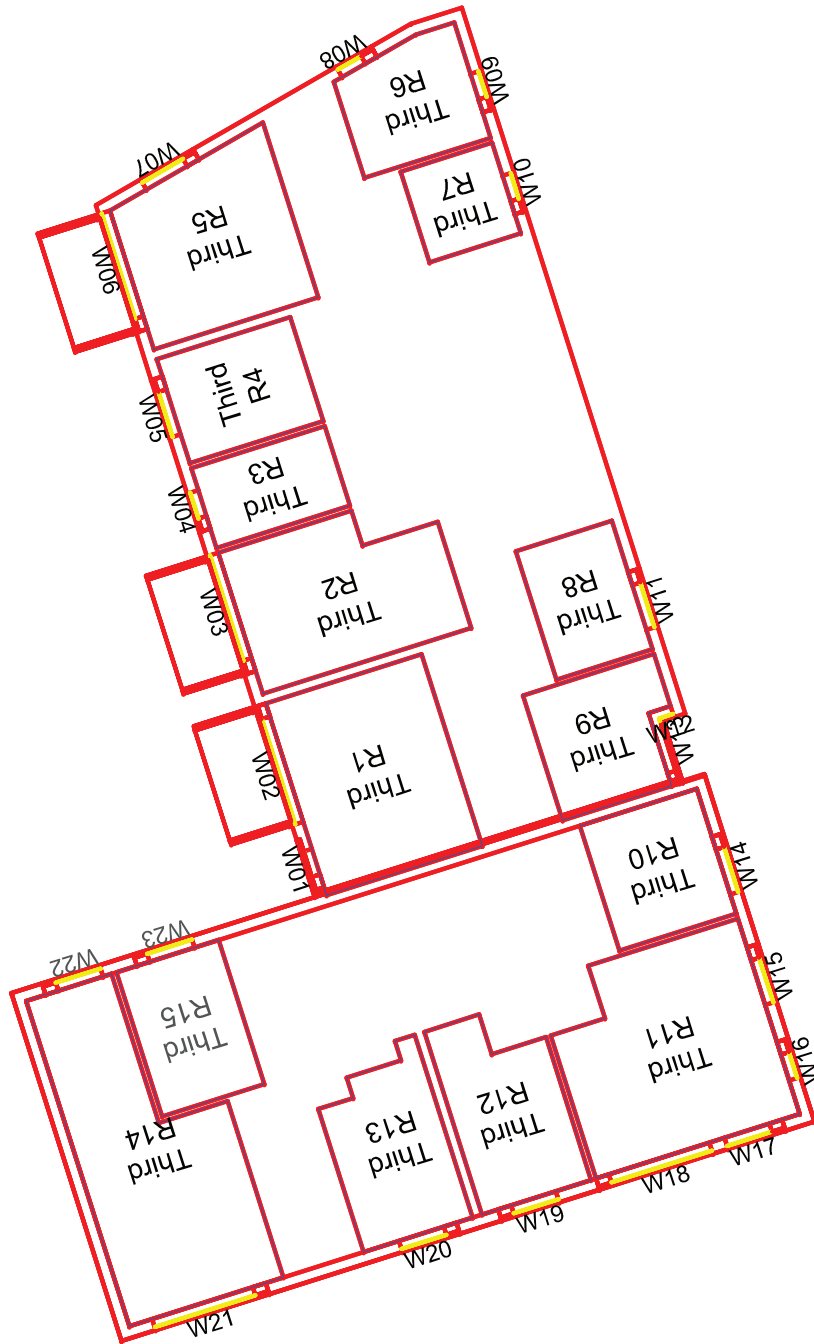
Project 587 Kingston Road

Title Second Floor  
Room Layout

Drawn DB Checked DF

Date 05/12/2014 Rel no. ID02

Drawing no. 1478-ID03



Sources of information

**Robin Walker Architects**

1837\_Site\_A.dwg  
1837\_Elevations\_A.dwg  
proposed plans and elevations - r2.dwg  
Received: 05/12/14

Site Photos

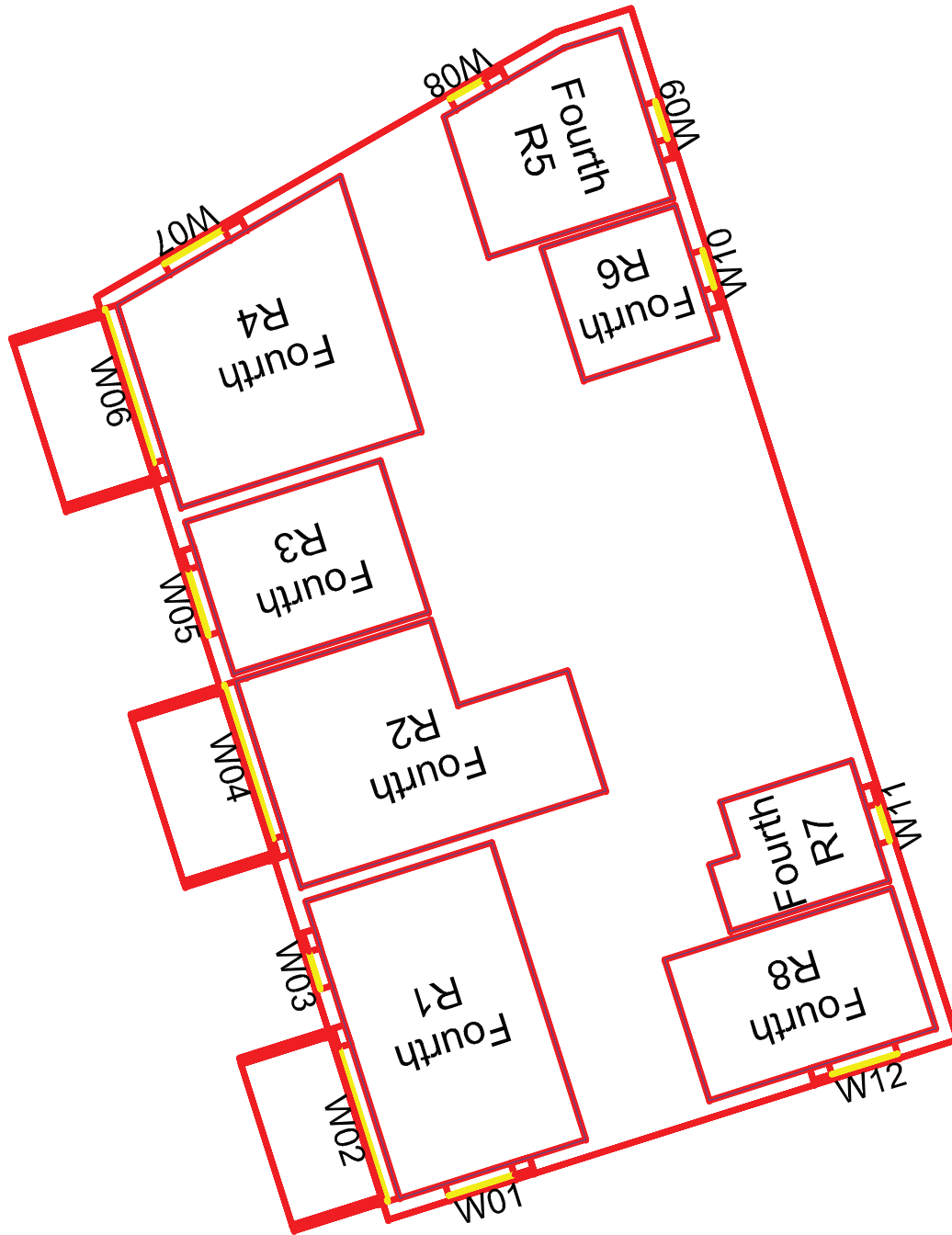
Project 587 Kingston Road

Title Third Floor  
Room Layout

Drawn DB Checked DF

Date 05/12/2014 Rel no. ID02

Drawing no. 1478-ID03



Sources of information

**Robin Walker Architects**

1837\_Site\_A.dwg  
1837\_Elevations\_A.dwg  
proposed plans and elevations - r2.dwg  
Received: 05/12/14

Site Photos

Project 587 Kingston Road

Title Fourth Floor  
Room Layout

Drawn DB Checked DF

Date 05/12/2014 Rel no. ID02

Drawing no. 1478-ID04

Floor	Room ID	Window ID	Room Use	Win. Trans.	Glazing Area	Theta	Room Area	Room	Split Calc Multiplier	ADF	TOTAL ADF
B1											
Ground	R1	W01-L	Kitchen	0.65	0.94	54.14	136.90	0.60	0.15	0.06	
		W01-U	Kitchen	0.65	1.58	57.00	136.90	0.60	1.00	0.77	
		W02-L	Kitchen	0.65	0.94	84.81	136.90	0.60	0.15	0.19	
		W02-U	Kitchen	0.65	1.58	80.10	136.90	0.60	1.00	0.94	<b>1.95</b>
Ground	R2	W03-L	Living room	0.65	2.21	58.90	77.89	0.60	0.15	0.25	
		W03-U	Living room	0.65	3.71	60.87	77.89	0.60	1.00	2.94	<b>3.20</b>
Ground	R3	W04-L	Living room	0.65	2.21	66.79	115.56	0.60	0.15	0.19	
		W04-U	Living room	0.65	3.71	66.71	115.56	0.60	1.00	2.18	
		W05-L	Living room	0.65	2.69	87.47	115.56	0.60	0.15	0.31	
		W05-U	Living room	0.65	4.51	81.57	115.56	0.60	1.00	3.23	<b>5.91</b>
Ground	R4	W06-L	Kitchen	0.65	0.94	84.91	67.65	0.60	0.15	0.18	
		W06-U	Kitchen	0.65	1.58	80.18	67.65	0.60	1.00	1.90	
		W07-L	Kitchen	0.65	0.54	79.34	67.65	0.60	0.15	0.10	
		W07-U	Kitchen	0.65	0.90	76.07	67.65	0.60	1.00	1.03	<b>3.21</b>
First	R1	W01-L	L/K/D	0.65	0.54	35.66	112.35	0.60	0.15	0.03	
		W01-U	L/K/D	0.65	0.90	29.65	112.35	0.60	1.00	0.24	
		W02-L	L/K/D	0.65	2.21	53.01	112.35	0.60	0.15	0.16	
		W02-U	L/K/D	0.65	3.71	52.84	112.35	0.60	1.00	1.77	<b>2.20</b>
First	R2	W03-L	Bedroom	0.65	0.94	65.15	68.55	0.60	0.15	0.14	
		W03-U	Bedroom	0.65	1.58	65.50	68.55	0.60	1.00	1.53	<b>1.67</b>
First	R3	W04-L	Bedroom	0.65	0.94	64.81	53.97	0.60	0.15	0.17	
		W04-U	Bedroom	0.65	1.58	62.83	53.97	0.60	1.00	1.87	<b>2.04</b>
First	R4	W05-L	Bedroom	0.65	0.94	56.81	74.95	0.60	0.15	0.11	
		W05-U	Bedroom	0.65	1.58	42.23	74.95	0.60	1.00	0.90	<b>1.01</b>
First	R5	W06-L	Bedroom	0.65	2.21	61.63	83.28	0.60	0.15	0.25	
		W06-U	Bedroom	0.65	3.71	45.69	83.28	0.60	1.00	2.07	
		W07-L	Bedroom	0.65	0.54	79.34	83.28	0.60	0.15	0.08	
		W07-U	Bedroom	0.65	0.90	76.06	83.28	0.60	1.00	0.83	<b>3.23</b>
First	R6	W08-L	Bedroom	0.65	0.54	79.34	63.12	0.60	0.15	0.10	
		W08-U	Bedroom	0.65	0.90	76.06	63.12	0.60	1.00	1.10	
		W09-L	Bedroom	0.65	0.54	79.34	63.12	0.60	0.15	0.10	
		W09-U	Bedroom	0.65	0.90	76.06	63.12	0.60	1.00	1.10	<b>2.41</b>
First	R7	W10-L	Bedroom	0.65	0.54	79.34	44.48	0.60	0.15	0.15	
		W10-U	Bedroom	0.65	0.90	76.06	44.48	0.60	1.00	1.56	<b>1.71</b>
First	R8	W11-L	Bedroom	0.65	0.94	84.83	59.00	0.60	0.15	0.21	
		W11-U	Bedroom	0.65	1.58	80.12	59.00	0.60	1.00	2.18	<b>2.39</b>
First	R9	W12-L	Bedroom	0.65	0.30	30.71	68.73	0.60	0.15	0.02	
		W12-U	Bedroom	0.65	0.50	30.21	68.73	0.60	1.00	0.22	
		W13-L	Bedroom	0.65	1.09	65.18	68.73	0.60	0.15	0.16	
		W13-U	Bedroom	0.65	1.84	63.62	68.73	0.60	1.00	1.73	<b>2.13</b>
First	R10	W14-L	Bedroom	0.65	0.94	84.63	66.76	0.60	0.15	0.18	
		W14-U	Bedroom	0.65	1.58	79.98	66.76	0.60	1.00	1.92	<b>2.10</b>
First	R11	W15-L	L/K/D	0.65	0.94	84.48	116.23	0.60	0.15	0.10	
		W15-U	L/K/D	0.65	1.58	79.88	116.23	0.60	1.00	1.10	
		W16-L	L/K/D	0.65	0.54	79.11	116.23	0.60	0.15	0.06	
		W16-U	L/K/D	0.65	0.90	75.91	116.23	0.60	1.00	0.60	
		W17-L	L/K/D	0.65	2.11	52.88	116.23	0.60	0.15	0.15	
W17-U	L/K/D	0.65	3.54	38.47	116.23	0.60	1.00	1.19	<b>3.20</b>		
First	R12	W18-L	Bedroom	0.65	0.94	68.88	70.58	0.60	0.15	0.14	
		W18-U	Bedroom	0.65	1.58	67.43	70.58	0.60	1.00	1.53	<b>1.67</b>
First	R13	W19-L	L/K/D	0.65	2.11	52.87	102.96	0.60	0.15	0.17	
		W19-U	L/K/D	0.65	3.54	37.53	102.96	0.60	1.00	1.31	<b>1.48</b>

Floor	Room ID	Window ID	Room Use	Win. Trans.	Glazing Area	Theta	Room Area	Room	Split Calc Multiplier	ADF	TOTAL ADF
First	R14	W20-L	Bedroom	0.65	0.94	68.08	75.47	0.60	0.15	0.13	<b>1.55</b>
		W20-U	Bedroom	0.65	1.58	67.04	75.47	0.60	1.00	1.43	
First	R15	W21-L	L/K/D	0.65	2.11	53.21	109.85	0.60	0.15	0.26	<b>1.49</b>
		W21-U	L/K/D	0.65	3.54	37.61	109.85	0.60	1.00	1.23	
First	R16	W22-L	Bedroom	0.65	0.94	69.13	86.33	0.60	0.15	0.11	<b>1.38</b>
		W22-U	Bedroom	0.65	1.58	68.01	86.33	0.60	1.00	1.26	
First	R17	W23-L	Bedroom	0.65	0.94	57.62	62.97	0.60	0.15	0.13	<b>2.50</b>
		W23-U	Bedroom	0.65	1.58	58.32	62.97	0.60	1.00	1.49	
		W24-L	Bedroom	0.65	0.54	56.39	62.97	0.60	0.15	0.07	
		W24-U	Bedroom	0.65	0.90	56.05	62.97	0.60	1.00	0.81	
Second	R1	W01-L	L/K/D	0.65	2.21	47.84	112.35	0.60	0.15	0.14	<b>2.00</b>
		W01-U	L/K/D	0.65	3.71	44.22	112.35	0.60	1.00	1.48	
		W02-L	L/K/D	0.65	0.54	54.97	112.35	0.60	0.15	0.04	
		W02-U	L/K/D	0.65	0.90	41.22	112.35	0.60	1.00	0.34	
Second	R2	W03-L	Bedroom	0.65	0.94	58.61	64.09	0.60	0.15	0.13	<b>1.22</b>
		W03-U	Bedroom	0.65	1.58	43.31	64.09	0.60	1.00	1.08	
Second	R3	W04-L	Bedroom	0.65	0.54	62.40	53.97	0.60	0.15	0.10	<b>1.06</b>
		W04-U	Bedroom	0.65	0.90	57.17	53.97	0.60	1.00	0.97	
Second	R4	W05-L	L/K/D	0.65	2.21	71.68	106.60	0.60	0.15	0.23	<b>2.83</b>
		W05-U	L/K/D	0.65	3.71	73.79	106.60	0.60	1.00	2.61	
Second	R5	W06-L	L/K/D	0.65	2.21	60.84	100.68	0.60	0.15	0.20	<b>3.43</b>
		W06-U	L/K/D	0.65	3.71	48.86	100.68	0.60	1.00	1.83	
		W07-L	L/K/D	0.65	0.94	84.91	100.68	0.60	0.15	0.12	
		W07-U	L/K/D	0.65	1.58	80.18	100.68	0.60	1.00	1.28	
Second	R6	W08-L	Bedroom	0.65	0.54	79.34	63.12	0.60	0.15	0.10	<b>2.41</b>
		W08-U	Bedroom	0.65	0.90	76.07	63.12	0.60	1.00	1.10	
Second	R6	W09-L	Bedroom	0.65	0.54	79.34	63.12	0.60	0.15	0.10	<b>2.41</b>
		W09-U	Bedroom	0.65	0.90	76.06	63.12	0.60	1.00	1.10	
Second	R7	W10-L	Bedroom	0.65	0.54	79.34	44.48	0.60	0.15	0.15	<b>1.71</b>
		W10-U	Bedroom	0.65	0.90	76.06	44.48	0.60	1.00	1.56	
Second	R8	W11-L	Bedroom	0.65	0.94	84.89	59.00	0.60	0.15	0.21	<b>2.39</b>
		W11-U	Bedroom	0.65	1.58	80.17	59.00	0.60	1.00	2.18	
Second	R9	W12-L	Bedroom	0.65	0.30	31.40	68.73	0.60	0.15	0.02	<b>2.14</b>
		W12-U	Bedroom	0.65	0.50	30.90	68.73	0.60	1.00	0.23	
		W13-L	Bedroom	0.65	1.09	65.18	68.73	0.60	0.15	0.16	
		W13-U	Bedroom	0.65	1.84	63.62	68.73	0.60	1.00	1.73	
Second	R10	W14-L	Bedroom	0.65	0.94	84.82	66.60	0.60	0.15	0.18	<b>2.11</b>
		W14-U	Bedroom	0.65	1.58	80.14	66.60	0.60	1.00	1.93	
Second	R11	W15-L	L/K/D	0.65	0.94	84.76	116.23	0.60	0.15	0.10	<b>3.52</b>
		W15-U	L/K/D	0.65	1.58	80.12	116.23	0.60	1.00	1.11	
		W16-L	L/K/D	0.65	0.54	79.28	116.23	0.60	0.15	0.06	
		W16-U	L/K/D	0.65	0.90	76.05	116.23	0.60	1.00	0.60	
		W17-L	L/K/D	0.65	2.11	61.76	116.23	0.60	0.15	0.17	
Second	R12	W18-L	Bedroom	0.65	0.94	77.87	70.58	0.60	0.15	0.16	<b>1.93</b>
		W18-U	Bedroom	0.65	1.58	77.73	70.58	0.60	1.00	1.77	
Second	R13	W19-L	L/K/D	0.65	2.11	61.83	102.96	0.60	0.15	0.19	<b>1.86</b>
		W19-U	L/K/D	0.65	3.54	47.75	102.96	0.60	1.00	1.67	
Second	R14	W20-L	Bedroom	0.65	0.94	77.39	75.47	0.60	0.15	0.15	<b>1.79</b>
		W20-U	Bedroom	0.65	1.58	77.51	75.47	0.60	1.00	1.65	
Second	R15	W21-L	L/K/D	0.65	2.11	62.02	109.85	0.60	0.15	0.18	

Floor	Room ID	Window ID	Room Use	Win. Trans.	Glazing Area	Theta	Room Area	Room	Split Calc Multiplier	ADF	TOTAL ADF
		W21-U	L/K/D	0.65	3.54	47.73	109.85	0.60	1.00	1.56	<b>1.74</b>
Second	R16	W22-L	Bedroom	0.65	0.94	78.33	86.33	0.60	0.15	0.13	
		W22-U	Bedroom	0.65	1.58	77.58	86.33	0.60	1.00	1.44	<b>1.57</b>
Second	R17	W23-L	Bedroom	0.65	0.94	69.67	69.22	0.60	0.15	0.14	
		W23-U	Bedroom	0.65	1.58	67.24	69.22	0.60	1.00	1.56	
		W24-L	Bedroom	0.65	0.54	62.30	69.22	0.60	0.15	0.07	
		W24-U	Bedroom	0.65	0.90	61.10	69.22	0.60	1.00	0.81	<b>2.58</b>
Third	R1	W01-L	L/K/D	0.65	0.54	48.99	112.35	0.60	0.15	0.04	
		W01-U	L/K/D	0.65	0.90	52.51	112.35	0.60	1.00	0.43	
		W02-L	L/K/D	0.65	2.21	56.53	112.35	0.60	0.15	0.17	
		W02-U	L/K/D	0.65	3.71	44.07	112.35	0.60	1.00	1.48	<b>2.11</b>
Third	R2	W03-L	L/K/D	0.65	2.21	66.72	106.60	0.60	0.15	0.21	
		W03-U	L/K/D	0.65	3.71	63.65	106.60	0.60	1.00	2.25	<b>2.46</b>
Third	R3	W04-L	Bedroom	0.65	0.54	60.18	53.97	0.60	0.15	0.19	
		W04-U	Bedroom	0.65	0.90	47.06	53.97	0.60	1.00	0.90	<b>1.09</b>
Third	R4	W05-L	Bedroom	0.65	0.94	74.76	64.09	0.60	0.15	0.17	
		W05-U	Bedroom	0.65	1.58	70.49	64.09	0.60	1.00	1.76	<b>1.93</b>
Third	R5	W06-L	L/K/D	0.65	2.21	60.95	100.68	0.60	0.15	0.20	
		W06-U	L/K/D	0.65	3.71	49.16	100.68	0.60	1.00	1.84	
		W07-L	L/K/D	0.65	0.94	84.91	100.68	0.60	0.15	0.12	
		W07-U	L/K/D	0.65	1.58	80.18	100.68	0.60	1.00	1.28	<b>3.44</b>
Third	R6	W08-L	Bedroom	0.65	0.54	79.34	63.12	0.60	0.15	0.10	
		W08-U	Bedroom	0.65	0.90	76.07	63.12	0.60	1.00	1.10	
		W09-L	Bedroom	0.65	0.54	79.34	63.12	0.60	0.15	0.10	
		W09-U	Bedroom	0.65	0.90	76.06	63.12	0.60	1.00	1.10	<b>2.41</b>
Third	R7	W10-L	Bedroom	0.65	0.54	79.34	44.48	0.60	0.15	0.15	
		W10-U	Bedroom	0.65	0.90	76.06	44.48	0.60	1.00	1.56	<b>1.71</b>
Third	R8	W11-L	Bedroom	0.65	0.94	84.91	59.00	0.60	0.15	0.21	
		W11-U	Bedroom	0.65	1.58	80.18	59.00	0.60	1.00	2.18	<b>2.39</b>
Third	R9	W12-L	Bedroom	0.65	0.30	33.45	68.73	0.60	0.15	0.02	
		W12-U	Bedroom	0.65	0.50	35.33	68.73	0.60	1.00	0.26	
Third	R9	W13-L	Bedroom	0.65	1.09	65.38	68.73	0.60	0.15	0.16	
		W13-U	Bedroom	0.65	1.84	63.80	68.73	0.60	1.00	1.73	<b>2.18</b>
Third	R10	W14-L	Bedroom	0.65	0.94	84.91	66.24	0.60	0.15	0.18	
		W14-U	Bedroom	0.65	1.58	80.18	66.24	0.60	1.00	1.94	<b>2.13</b>
Third	R11	W15-L	L/K/D	0.65	0.94	84.91	134.24	0.60	0.15	0.09	
		W15-U	L/K/D	0.65	1.58	80.18	134.24	0.60	1.00	0.96	
		W16-L	L/K/D	0.65	0.54	79.34	134.24	0.60	0.15	0.05	
		W16-U	L/K/D	0.65	0.90	76.06	134.24	0.60	1.00	0.52	
		W17-L	L/K/D	0.65	0.94	84.87	134.24	0.60	0.15	0.09	
		W17-U	L/K/D	0.65	1.58	80.18	134.24	0.60	1.00	0.96	
		W18-L	L/K/D	0.65	2.11	87.52	134.24	0.60	0.15	0.21	
		W18-U	L/K/D	0.65	3.54	81.62	134.24	0.60	1.00	2.19	<b>5.06</b>
Third	R12	W19-L	Bedroom	0.65	0.94	84.86	80.07	0.60	0.15	0.15	
		W19-U	Bedroom	0.65	1.58	80.18	80.07	0.60	1.00	1.61	<b>1.76</b>
Third	R13	W20-L	Bedroom	0.65	0.94	84.85	79.52	0.60	0.15	0.15	
		W20-U	Bedroom	0.65	1.58	80.18	79.52	0.60	1.00	1.62	<b>1.77</b>
Third	R14	W21-L	L/K/D	0.65	2.11	87.50	152.37	0.60	0.15	0.18	
		W21-U	L/K/D	0.65	3.54	81.62	152.37	0.60	1.00	1.93	
		W22-L	L/K/D	0.65	0.94	73.86	152.37	0.60	0.15	0.07	
		W22-U	L/K/D	0.65	1.58	71.75	152.37	0.60	1.00	0.76	<b>2.94</b>
Third	R15	W23-L	Bedroom	0.65	0.94	67.95	67.16	0.60	0.15	0.14	

Floor	Room ID	Window ID	Room Use	Win. Trans.	Glazing Area	Theta	Room Area	Room	Split Calc Multiplier	ADF	TOTAL ADF
		W23-U	Bedroom	0.65	1.58	66.61	67.16	0.60	1.00	1.59	<b>1.74</b>
Fourth	R1	W01-L	L/K/D	0.65	0.94	84.91	101.95	0.60	0.15	0.12	
		W01-U	L/K/D	0.65	1.58	80.18	101.95	0.60	1.00	1.26	
		W02-L	L/K/D	0.65	2.21	78.21	101.95	0.60	0.15	0.26	
		W02-U	L/K/D	0.65	3.71	81.65	101.95	0.60	1.00	3.02	
		W03-L	L/K/D	0.65	0.54	73.19	101.95	0.60	0.15	0.06	
		W03-U	L/K/D	0.65	0.90	76.07	101.95	0.60	1.00	0.68	<b>5.40</b>
Fourth	R2	W04-L	L/K/D	0.65	2.21	78.18	103.09	0.60	0.15	0.26	
		W04-U	L/K/D	0.65	3.71	81.65	103.09	0.60	1.00	2.98	<b>3.24</b>
Fourth	R3	W05-L	Bedroom	0.65	0.94	79.41	64.09	0.60	0.15	0.18	
		W05-U	Bedroom	0.65	1.58	80.18	64.09	0.60	1.00	2.01	<b>2.18</b>
Fourth	R4	W06-L	L/K/D	0.65	2.21	78.22	100.68	0.60	0.15	0.26	
		W06-U	L/K/D	0.65	3.71	81.65	100.68	0.60	1.00	3.06	
		W07-L	L/K/D	0.65	0.94	84.91	100.68	0.60	0.15	0.12	
		W07-U	L/K/D	0.65	1.58	80.18	100.68	0.60	1.00	1.28	<b>4.72</b>
Fourth	R5	W08-L	Bedroom	0.65	0.54	79.34	63.12	0.60	0.15	0.10	
		W08-U	Bedroom	0.65	0.90	76.07	63.12	0.60	1.00	1.10	
		W09-L	Bedroom	0.65	0.54	79.34	63.12	0.60	0.15	0.10	
		W09-U	Bedroom	0.65	0.90	76.07	63.12	0.60	1.00	1.10	<b>2.41</b>
Fourth	R6	W10-L	Bedroom	0.65	0.54	79.34	44.48	0.60	0.15	0.15	
		W10-U	Bedroom	0.65	0.90	76.07	44.48	0.60	1.00	1.56	<b>1.71</b>
Fourth	R7	W11-L	Bedroom	0.65	0.54	79.34	45.90	0.60	0.15	0.14	
		W11-U	Bedroom	0.65	0.90	76.06	45.90	0.60	1.00	1.51	<b>1.66</b>
Fourth	R8	W12-L	Bedroom	0.65	0.94	84.91	68.24	0.60	0.15	0.18	
		W12-U	Bedroom	0.65	1.58	80.18	68.24	0.60	1.00	1.89	<b>2.06</b>